

3-39. ETHER TUBING REPLACEMENT

THIS TASK COVERS:

a. Removal

b. Installation

INITIAL SETUP:

APPLICABLE MODELS

All

TOOLS

General mechanic's tool kit (Appendix E, Item 1)

MATERIALS/PARTS

Three tiedown straps (Appendix D, Item 684)

REFERENCES (TM)

TM 9-2320-272-10

TM 9-2320-272-24P

EQUIPMENT CONDITION

- Parking brake set (TM 9-2320-272-10).
- Left splash shield removed (TM 9-2320-272-10).

GENERAL SAFETY INSTRUCTIONS

Ether is flammable. Keep a fire extinguisher nearby.

WARNING

Ether is extremely flammable. Do not perform this procedure near open flame. Injury to personnel may result.

a. Removal

1. Remove three tiedown straps (5) from atomizer ether supply tube (1) and thermal close ether supply tube (4). Discard tiedown straps (5).
2. Disconnect thermal close ether supply tube (4) from thermal close adapter (3) and ether valve adapter (9).

NOTE

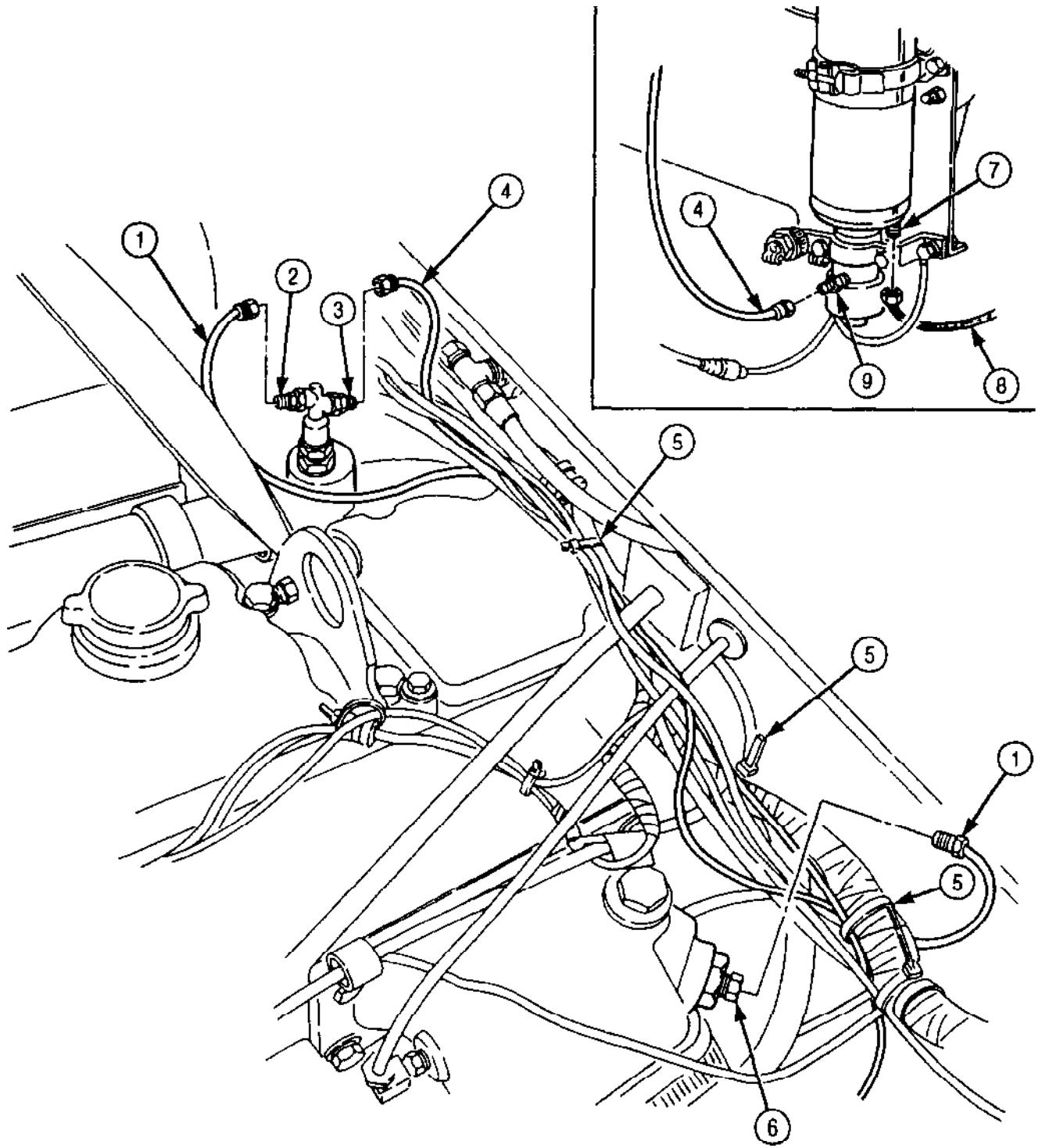
Tag tubes for installation.

3. Disconnect atomizer ether supply tube (1) from thermal close adapter (2) and atomizer (6).
4. Disconnect ether cylinder relief tube (8) from ether cylinder relief inlet adapter (7).

b. Installation

1. Connect ether cylinder relief tube (8) to ether cylinder relief inlet adapter (7).
2. Connect atomizer ether supply tube (1) to thermal close adapter (2) and atomizer (6).
3. Connect thermal close ether supply tube (4) to thermal close adapter (3) and ether valve adapter (9).
4. Secure atomizer ether supply tube (1) and thermal close ether supply tube (4) with three new tiedown straps (5).

3-39. ETHER TUBING REPLACEMENT (Contd)



FOLLOW-ON TASK: Install left splash shield (TM 9-2320-272-10).